

Jan 2022

# REQUIREMENTS FOR AN **ANDROID** DEVICE TO WORK WITH **IRISHIELD™-USB SERIES**

## Requirements

1. Android version 3.1 or later
2. Supporting FULL USB HOST
3. Allowing current output from the USB port:
  - IriShield-USB MK 2120U/MO 2120: 250 mA or higher
  - IriShield-USB MO 2121: 290 mA or higher
  - IriShield-USB BK 2121U / BO 2121: 430 mA or higher

## Recommended Cable

The recommended cable to connect IriShield into an Android device is a micro-to-micro OTG cable (the red end to be plugged in the Android device).

Such cable can be bought at <http://hakshop.myshopify.com/products/micro-to-micro-otg>

If the above cable is unavailable, a combination of the standard micro-to-male USB and a micro-to-female USB may also work.

## List of Working Devices

Android devices confirmed to meet the above requirements (tested by IriTech) include, but are not limited to the following

Phone	Note	Tablet
Samsung Galaxy S2 Samsung Galaxy S3 Samsung Galaxy S4 Sony Ericsson Xperia Sony Ericsson Xperia Z Sony Ericsson Xperia Arc Sony Ericsson Xperia Arc S Motorola RARZ MAXX HD Xolo Q1000 Opus Chinese Phone Model S6	Samsung Galaxy Note 2 Samsung Galaxy Note 3	Nexus 7 Samsung Galaxy Tab 2 Asus MeMO Pad Motorola Xoom Alcatel One Touch P321

The following Android devices also work with IriShield™-USB BK 2121U (binocular camera) that requires more power consumption (430 mA).

Phone	Note	Tablet
Samsung Galaxy S4	Samsung Galaxy Note 3	Nexus 7 Asus MeMO Pad Motorola Xoom

## Available Software on Google Play

1. IriShield Demo
2. IriTracker
3. ForYourIrisOnly – FYIO

(If those software cannot be found on Google Play, the Android device may not satisfy the first two requirements. IriTracker require an Android device with large screen – 5 inches or higher).

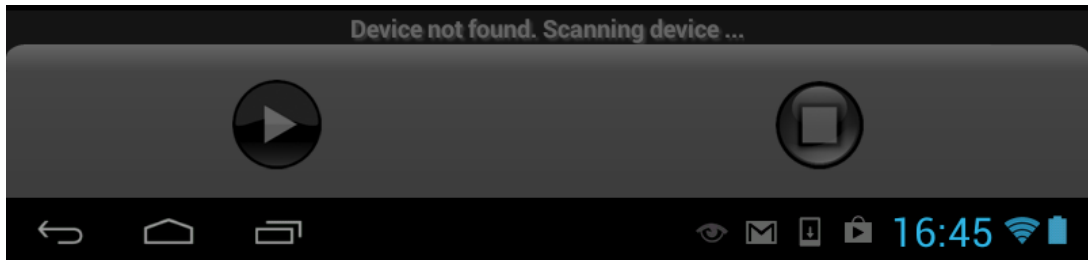
## Using IriShield Demo

(This software supports both IriShield monocular and binocular cameras)

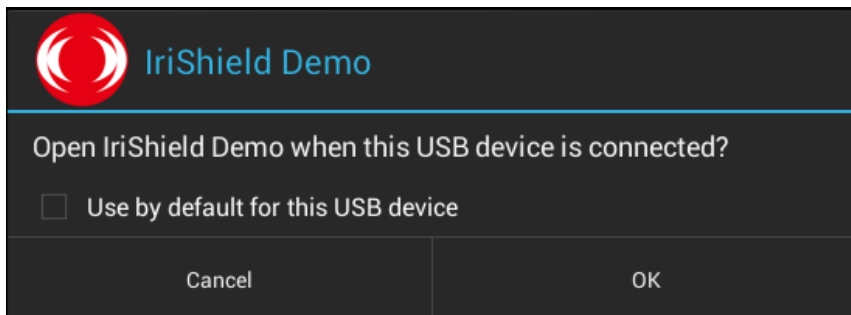
1. Connect OTG cable into the IriShield and Android device (the red end to be plugged in the Android device).



2. When IriShield is connected into the Android device, the blue light turns on during booting time, and turns off when booting finishes. The current status on screen is "Device not found. Scanning device ...".



3. After booting finishes, the following message appears. Please select "OK".



4. Then the status will change to "Device connected", and user can use IriShield Demo now.

